

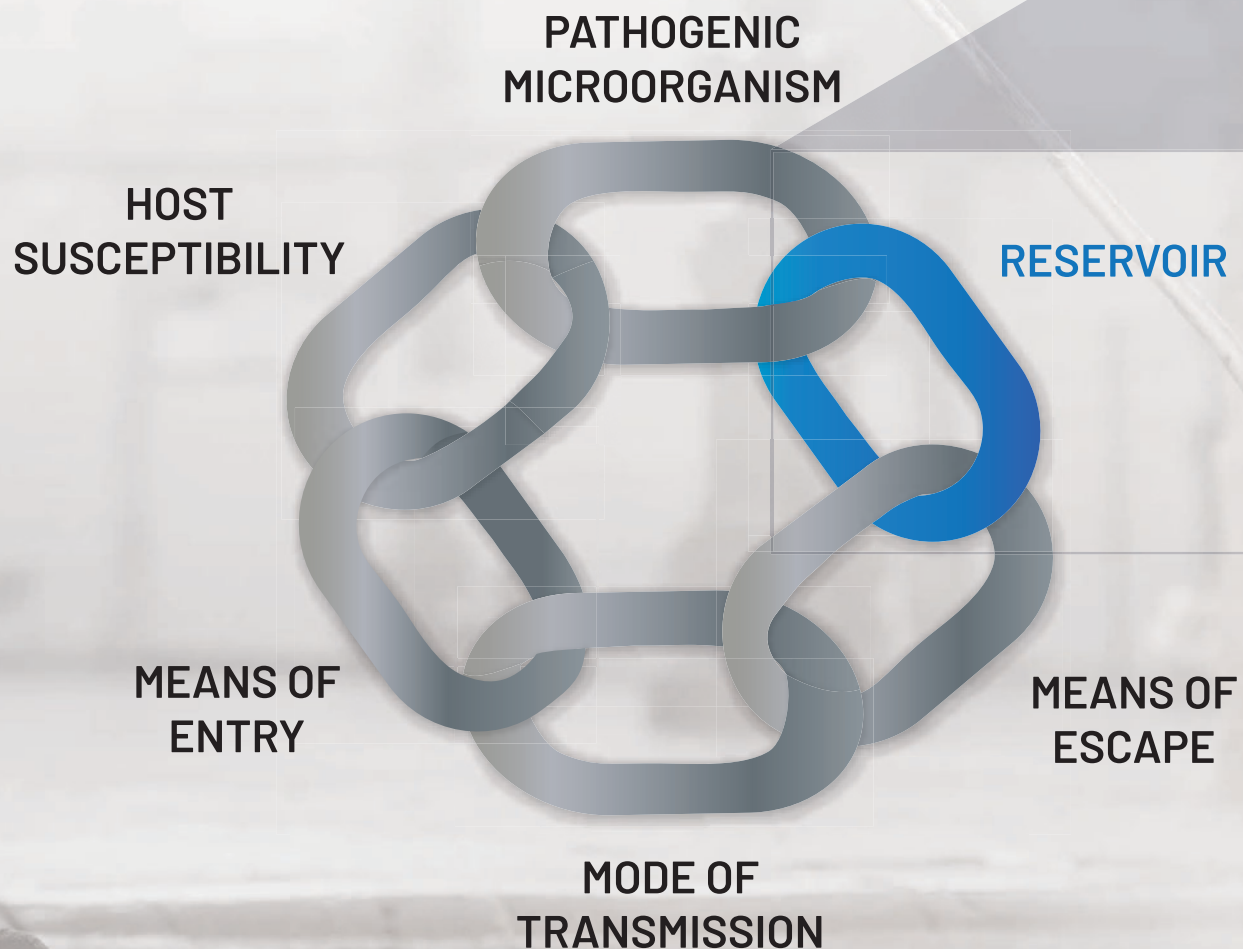


PROTECTIVE INDUSTRIAL  
**P O L Y M E R S**

**Do your floors play a role  
in the chain of transmission?**

# MICROBE TRANSMISSION CAN BE A PROBLEM BUT IT IS A LIABILITY

## Chain of Transmission



Pathogens can survive on *surfaces for months* and humans' subconscious ability to touch our face *every 3 minutes* is just one example of how pathogens can spread. Indirect contact and inhalation are two common transmission events in which a pathogen leaves the reservoir and enters a susceptible host.

Bacteria multiplies at a rapid endless rate, doubling every 20 minutes with the potential to reach ONE BILLION bacteria in a work day!



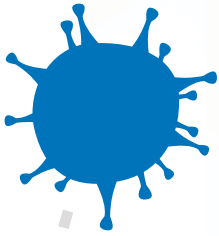
The floor harbors pathogens and that makes it a reservoir.

Pathogens can get on the floor from a variety sources including under the shoes of people, or on the wheels of equipment.

**Gravity turns floors into depositories of microscopic organisms.**

**So what's the problem?** Isn't the floor a low touch surface? It's not like the pathogens are going to jump off the floor...

# You touch the floor more than you'd think!



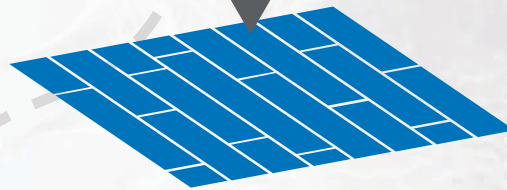
## Bacteria

A study found when inspecting shoes an average of 421,000 units of different bacteria. Bacteria found on the footwear included *E. coli* as well as other bacteria causing pneumonia (*Klebsiella pneumoniae*) and respiratory tract infections (*Serratia ficaria*).  
(University of Arizona)



## Transfer

The transfer rate from shoe to clean tile was an alarming 90-99%  
(University of Arizona)



## High Touch Objects

The average person touches the floor with their hand 50 or more times everyday through indirect contact.

(Mark Warner, formerly with the Department of Homeland Security)

## Hands

57% of objects that became contaminated from contact with the floor transfer pathogens (bacteria) to hands.

(Deshpande, Abhishek, AIJC)

## Your floor can cough!

Resuspended dust is estimated to constitute up to 60% of the total particulate matter in indoor air... making floor dust a major source of the microorganisms that we breathe.

(Alshitawi and Awbi, 2011; Ocak et al., 2012)



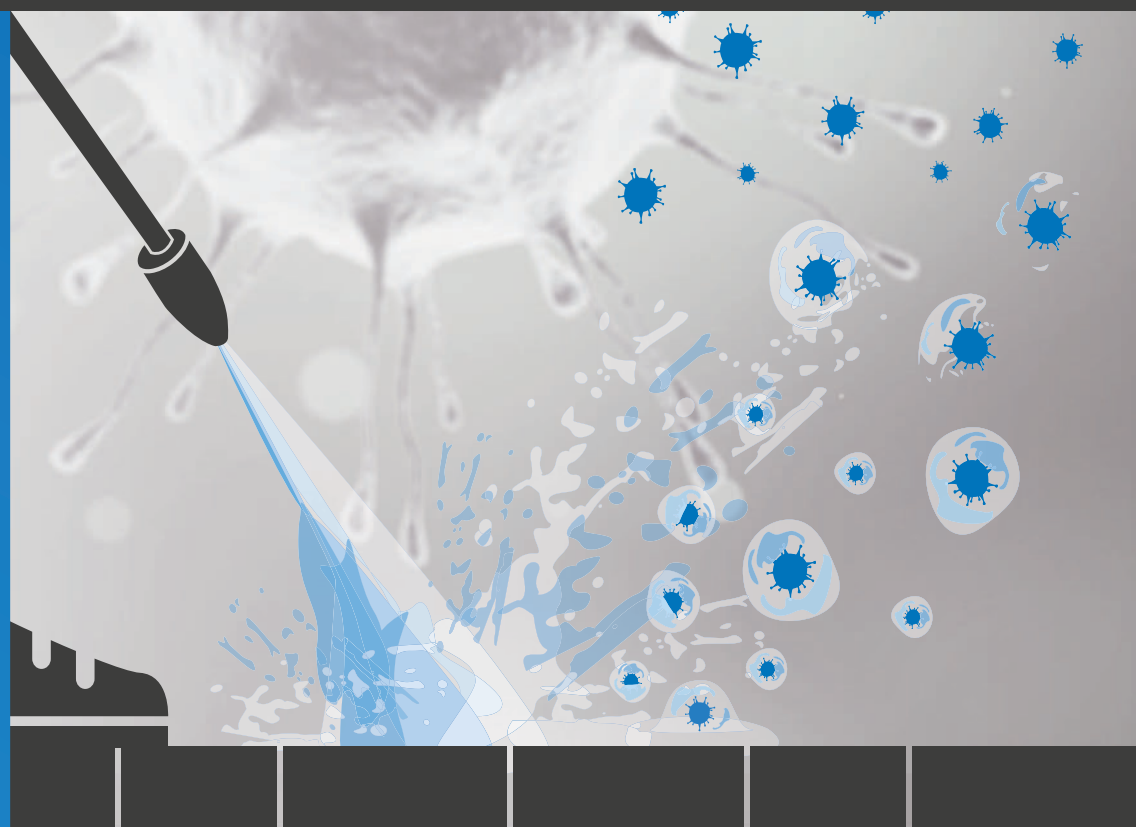
## Floors are an underappreciated source for pathogen transmission.

Through high touch objects, water droplets, and walking-induced dust resuspension, pathogenic microorganisms can be transmitted from the floor to a susceptible host.

## Your floor can sneeze!

A single drop of water can create hundreds of tiny airborne droplets, each one carrying as many as several thousand live bacteria.

(Ekaterina Mirskaya & Igor E. Agranovski., 2018)





# Did you know you can make your existing floors antimicrobial?

Inhibicrobe Solutions are available for almost any existing hard surface or you can create a new interdependent antimicrobial flooring system.

## INHIBICROBE ANTIMICROBIAL FLOOR & WALL SYSTEMS ————— why not? —————

### Antibacterial + Antifungal = Antimicrobial

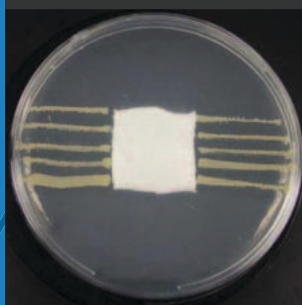
InhibiCrobe, antimicrobial systems work at a cellular level to continually disrupt and inhibit the growth of harmful microorganisms and even contribute to protect surfaces against viruses.

### Did you know, Antimicrobial Additive ≠ Antimicrobial Surface?

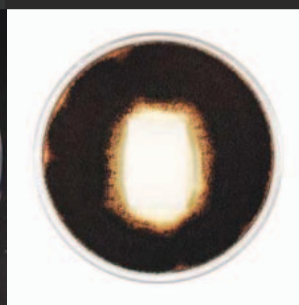
Just because a solution contains an antimicrobial additive, does not ensure the finished product is effective at preventing microbe growth. PIP's Inhibicrobe technology has been independently tested and verified as a finished flooring system to be an effective antimicrobial surface.



AATCC Method 147  
Antibacterial Test



AATCC Method 30  
Antifungal Test



# validated solutions that can help reduce risk exposure



## Existing Flooring

InhibiCrobe solutions are available for almost any hard surface.

Transform the following: Terrazzo, Tile, Wood, Polymer, Concrete



## Concrete Treatments

InhibiCrobe solutions are available in the entire ProForm line of concrete treatments.

CD Series - Concrete Densifiers (Polishing/Dust Proofing)

VM Series - Vapor Mitigators



## Flooring Systems

InhibiCrobe solutions are available in the entire Protect line of industrial flooring systems.

CT Series - Coating Systems

BC Series - Broadcast Systems

SL Series - Slurry Systems

MT Series - Mortar Systems



## Wall Systems

InhibiCrobe solutions are available in the entire ProWall line of professional wall systems

VC Series - Vertical Coating Systems

VR Series - Vertical Rendering Systems

VL Series - Vertical Lining Systems

# INHIBICROBE

ANTIMICROBIAL FLOOR & WALL SYSTEMS

— why not? —

info@protectpoly.com | protectpoly.com

(800) 974-1323

**Protective Industrial Polymers** is a consultative manufacturer providing concrete protection systems to the industrial marketplace through its network of contractor partners to satisfy end user performance requirements.

CONCRETE  
PROTECTION

CONTRACTOR  
PARTNER

CUSTOMER  
COMMITTED

